



Rate: 20 to 30 big bags/hr.
Weight capacity: 2 tons/big bag
Objectives: mobile station & connection to trade loading spout

MOBILE CONDITIONING UNIT FOR TRUCK CONNECTION OR SILO UNLOADING SPOUT

PALAMATIC PROCESS has developed a complete range of big bag filling stations to meet different industrial needs. The FlowMatic® 07 model is the most effective and flexible solution for simple packaging of bulk materials under multiple feeding points. It is particularly suitable for loading under silos or feeding points that require complete cleaning.

TECHNICAL SPECIFICATIONS

Flow rate: 20 to 30 big bags/hr.
Manufacturing materials: mild steel, SS 304L, SS 316L
Finishes: RAL 9006, micro-blasted, electropolishing
Installed power: 1.7 kW
Average power consumption: 0.2 kW
Compressed air consumption: 0.9 Nm³/hr.
Service pressure: 6 bars
Input 4 - 20 mA: 1
Input TOR: 2
Output TOR: 6
Weighing precision: ± 500 grams
Dust collecting rate: 300 m³/hr.
Maximum dimensions of big bags:
Length x width x height: 1,550 x 1,550 x 2,400 mm
Round forks or « U » version (to remove big bag with the straps)



Load cells for dosing and commercial weighing



Connection to the trade loading spout

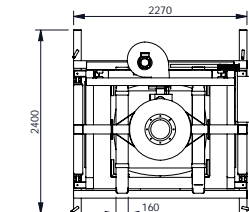
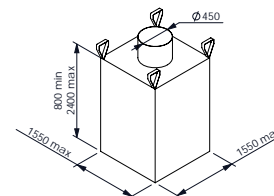
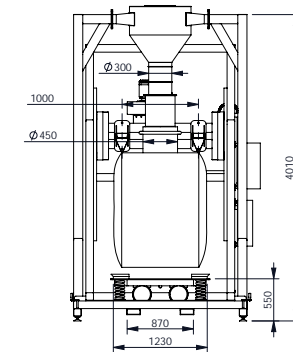
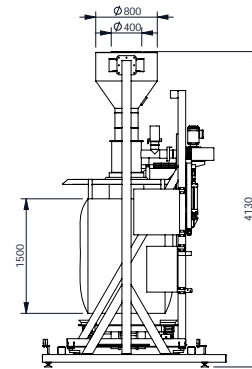


Unloading cone



Mobile station (wheels, forklift)

Advantages



Options



Automatic release



Clamping ring

See all our options on page 28