

## VIBRATION / EXTRACTION **Electric vibrator**

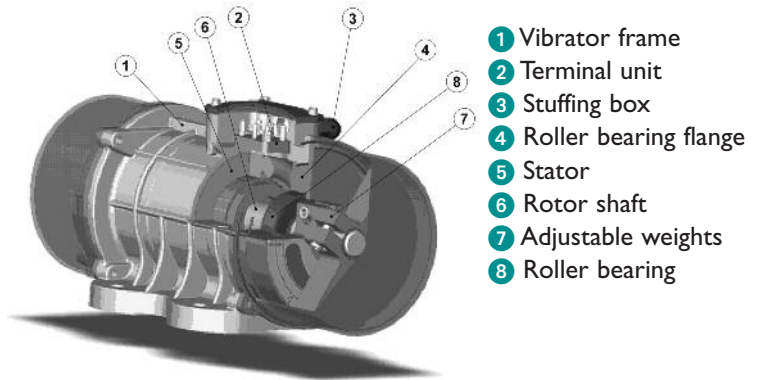
### *Improve difficult material flow rates*

External electric vibrators are used in a large number of domains to improve flow rates as well as sieving, transportation, cleaning, filtering, compacting, and sorting.



#### **TECHNICAL CHARACTERISTICS:**

4 speeds available: 750, 1,000, 1,500, and 3,000 RPM  
(2, 4, 6, and 8 terminals)  
Motor protection: IP65  
Class F tropicalization  
Adjustable frequency  
Standard voltage: 230/400 V, 50 Hz (264/460 V, 60 Hz)  
Standard: ATEX ExII3D certified, maximum surface temperature = 85°C (185°F)  
Excellent value for money  
Adjustable intensity by offsetting risers  
Power and intensity depending on model selected (see material technical data sheet)



## Installations



# Electric micro-vibrator

## Improve difficult material flow Rates

Electric microvibrators are designed to produce low vibration:

Centrifugal force: :

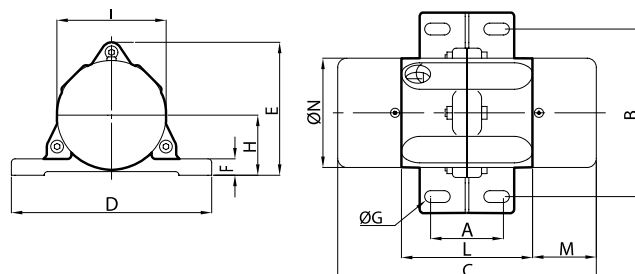
- 0 to 5 kg
- 0 to 22 kg
- 0 to 40 kg

Suitable for pharmaceutical, food-processing, and packaging industries.



### TECHNICAL CHARACTERISTICS:

- Intensive, no-maintenance use
- Weight: min. 1.4 kg / max. 1.7 kg
- Centrifugal force: adjustable from 0 to 40 kg
- 400 V, 50 Hz 3-phase; 230 V, 50 Hz direct current
- IP 65 Protection
- Class F protection
- Special voltages
- ATEX ExII3D standard
- Continuous availability
- Excellent value for money



### OVERALL DIMENSIONS:

TYPE	Dimensions												
	C (mm) 50Hz	M (mm) 50Hz	A (mm)	B (mm)	Ø G (mm)	Holes n°	D (mm)	E (mm)	F (mm)	H (mm)	I (mm)	L (mm)	N (mm)
<b>SINGLE PHASE</b>													
MICRO 4/3 M	142	35	25-40	92	6.5	4	110	73	9	33	60	72	60
MICRO 5/3 M	142	35	25-41	75	5.5	4	90	73	9	33	60	72	60
MICRO 20/3 M	142	35	25-42	92	6.5	4	110	73	9	33	60	72	60
MICRO 40/3 M	162	45	25-43	92	6.5	4	110	73	9	33	60	72	60
<b>3-PHASE</b>													
MICRO 20/3	142	35	25-40	92	6.5	4	110	73	9	33	60	72	60
MICRO 40/3	162	45	25-40	92	6.5	4	110	73	9	33	60	72	60

### TECHNICAL DATA:

TYPE	Mechanical Properties						Electrical characteristics					
	Torque KgcM		Centrifugal force in kg		Weight		Power Kw		Max. intensity A		Temp. Class Dust (°C)	Cable Gland
	50Hz	60Hz	50Hz	60Hz	50Hz	50Hz	50 Hz	60 Hz	50 Hz	60 Hz		
<b>SINGLE PHASE</b>												
MICRO 4/3 M	0.12	0.12	5	8	1.4	3.1	0.02	0.02	0.3	0.6	100	M16
MICRO 5/3 M	0.12	0.12	5	8	1.4	3.1	0.02	0.02	0.3	0.6	100	M16
MICRO 20/3 M	0.39	0.39	22	32	1.5	3.3	0.03	0.04	0.10	0.23	100	M16
MICRO 40/3 M	0.78	0.55	40	40	1.7	3.7	0.07	0.07	0.40	0.80	100	M16
<b>3-PHASE</b>												
MICRO 20/3	0.39	0.39	22	32	1.5	3.3	0.03	0.04	0.10	0.12	100	M16
MICRO 40/3	0.78	0.55	40	40	1.7	3.7	0.07	0.07	0.25	0.25	100	M16

## OTHER SOLUTIONS AVAILABLE

- Roller, turbine, and ball vibrators, hammers, fluidizers



For further information: [www.palamaticprocess.com](http://www.palamaticprocess.com)

