

FEEDING

Gravity Rotary Valves

Flow rates from 2.2 to 19.5 litres / rev.



Material extraction and dosing

Designed for powdered and granulated material feed systems and unloading for silos, hoppers, pneumatic convey systems, bag filters, centrifugal separators...

TECHNICAL CHARACTERISTICS:

- 4 models: 150², 200², 250², 300²

These gravity rotary valves are composed of a tubular cast iron or stainless steel frame, a rotor with V-shaped compartments, a motor, and a cover on the opposite side of the motor.

Cast iron, 304, 316L stainless steel construction.

Depending upon application, the valves are equipped for quick disassembly making them easy to clean. Contact surfaces may be polished. An explosion and flame resistant ATEX version is available.

Installations



Stainless steel valve



Valve under a centrifugal separator



Proportioning valves



Valves under silos



Rotary valve feeding a pneumatic conveying piping. Specific design for plastic granules. Pressure differential resistance, degassing line, and stainless steel construction.

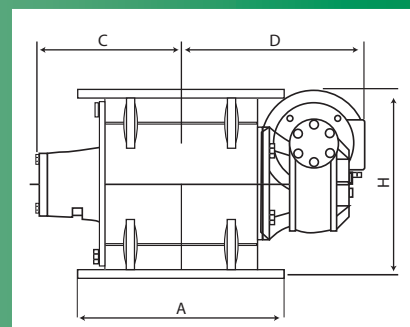
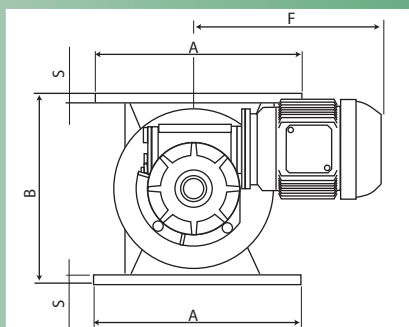
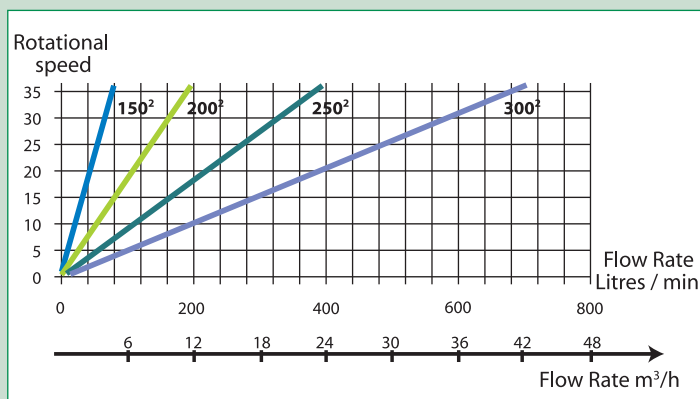
OPTIONS & ACCESSORIES

- Atex, zone 22 / 21 / 20 version
- Cast iron or 304 / 316L stainless steel construction, chrome-plated, nickel-plated, or teflon surface
- Wiper blades constructed of various materials to improve isolation
- Inserts to handle sticky materials
- Lubricated, air or gas fluxed gaskets
- Direct motorization via reducer / varidrive / chain
- Coaxial reducer with chain transmission
- Deliverable without motorization (bare shaft)
- High-torque motorization
- Speed regulator
- Rotor partialization
- Rotation indicator
- Motor servo-ventilation
- Thermistors on the motor
- NEMA-compliant electric motors

TYPE	150 ²	200 ²	250 ²	300 ²
Litres/rotation	2,2	5,4	10,9	19,5

The theoretical diagram provides indications on the type of device to use, given the fill coefficient is variable based on the material carried and the rotation speed.

There are three basic rotation speeds: 10, 20 or 30 rpm. Moreover, it is possible to power the valves through a speed regulator.



	A	B	C	S	D	F	H	ELECTRIC MOTOR		ROTOR		
								Power	Speed / min.	Torque	rpm. kg	Kg
150 ² /30	265	220	157	10	345	340	276	0,5	1410	110	30	58
150 ² /20	265	220	157	10	345	340	276	0,5	930	155	20	58
200 ² /30	320	280	205	13	345	340	306	0,75	1410	150	30	73
200 ² /20	320	280	205	13	345	340	306	0,5	930	155	20	73
250 ² /30	375	360	233	13	402	375	372	1,1	1410	240	30	123
250 ² /20	375	360	233	13	402	375	372	0,75	940	250	20	123
300 ² /30	440	455	275	15	430	400	420	1,5	1410	320	30	181
300 ² /20	440	455	275	15	430	400	420	1,1	940	360	20	181

Advantages:

- Compact, sturdy construction
- Easy access to internal mechanical parts

For further information: www.palamaticprocess.com

Rue de l'Écotais • Z.A. de La Croix Rouge • 35530 BRÉCÉ
 Tél. : +33 (0)2 99 86 06 22 • Fax : +33 (0)2 99 86 08 10

